

ISOTTIA

Made in Italy

2024



ISM 07

- New -



New model for the great ISM family of ISOTTA steering wheels. (Intelligente Steering Module)
This is a brand new design with a complete new keypad style and CNC anodized metal spokes design.
Metal spokes could be anodized in silver, black or titanium look.
Keypad is very well integrated with steering wheel.
Keypad button functions are 100% customizable.
Illuminated logo option available

PATENTED NON ROTATING SYSTEM TO KEEP KEYPAD ALWAYS IN THE STRAIGHT POSITION



DIAMETER: ø 350 mm - 13.80"
GRIP: Genuine Leather.
SPOKES: Aluminium, anodized
CENTRAL FLANGES: Aluminium, anodized
INNER RING: Aluminium, anodized
Handmade cross stitching

• Ref. Code: ISM 07 BLACK ST

ISM 05 ALL-IN-ONE



The new ISOTTA All-in-One steering wheel system includes ISM system and Sport Paddles.

The keypad take advantage of the ISOTTA patented technology preventing keyboard from turning together with the steering wheel. Buttons always maintain the position and never turn with steering wheel. (patented technology: PCT/IB2015/052111).

The functions which can be controlled directly from the buttons are limitless: every command of the boats can "migrate" to the keypads.

The system is designed to connect to any CAN/BUS network and integrate any CAN device.

The solid wire connection ensures the arrival of extremely secure and reliable electrical signals from the steering wheel itself, making it possible to control sensitive functions motor speed and cruise control.

Also, keyboard is directly connected to the battery of the boat and therefore it will never run out of charge, unlike wireless keyboards requiring battery.

Side controls levers are projected to allow precise and rapid control of engine trim, jackplate, trim tabs.

Electronic microswitches IP67 activable by simply pulling Paddles, with an immediate response of all components and a perfect feedback.

Ergonomic-design to ensure comfortable feeling without taking your hands off the wheel

External PCB for smart processing of commands

No reason to take your hands off the steering wheel while boating: with the new ISOTTA All-in-One steering wheel system, all essential functions are right at the driver's

ISOTTA **SIMRAD**

ISOTTA **GARMIN**



The first steering wheel with direct control of Simrad devices, now available to control up to 8 display together.

Thanks to the Isotta/Simrad partnership, steering wheel is equipped with Simrad functions control buttons .

OEM can choose which Simrad functions to control from steering wheel.

Also available with Stereo functions for selected stereo brands.

ISOTTA patented system allows keypad to always maintain the straight position while driving (center pad does not turn with steering wheel)

This is a full NMEA 2000® certificated product



ISOTTA introduces the first steering wheel to control multifunctional Garmin display through dedicated control buttons.

Thanks to the new partnership between Isotta and Garmin, the driver is now able to control every display directly from the steering wheel without taking the hands off it, exactly as it happens in the automotive industry.

The communication between the steering wheel and the display is based on a NMEA 2000 standard, to ensure the industry highest and most reliable connection.

ISM 02



ISM 05



ISM 04



ISM 01





- Projected to allow precise and rapid control of engine trim, jackplate, trim tabs and other components
- Electronic microswitches IP67 activable by simply pulling paddles, with immediate response of all components and perfect feedback.
- External Control Unit for an intelligent data processing
- Usable in replacing of the original switch controller or together with it
- Ergonomic-design to ensure comfortable feeling without taking your hands off the wheel
- Central fitting body with a limited overall dimensions for a better look design and perfect integration with steering wheel
- Adjustable two-side arms positioned along the helm to cover and protect all wires between paddles and dashboard
- Suitable for most steering helm and pump thanks to the universal fitting system.
- Nominal switching capability 20 Amp @ 14VDC resistive load
- Custom boatbuilder logo and icons available on each paddle

SUITABLE ON ALMOST EVERY ISOTTA STEERING WHEEL

SPORT PADDLES



Milled aluminum paddles

QUARK



- New -

DIAMETER: ø 350 mm - 13.80"
GRIP: Genuine Leather.
SPOKES: Aluminium.
CENTRAL FLANGES: Leather or PU.
INNER RING: Stainless steel.
Handmade cross stitching

Brand new design, with unique CNC aluminium spoke. Very solid look design inspired to the most modern fast cars. Genuine leather grip, also available with perforated leather. Center flange in leather or poliurethane. Metal spoke could be anodized in silver, black or titanium look

ISOTTA HUB ADAPTER REQUIRED FOR FITTING

• Ref. Code: 1140 5 N ST



RIV-7

New ISOTTA steering wheel, full aluminium CNC spokes 10mm thickness.
Equal spokes design enter into the leather grip to create a great mix of materials, with additional central "buttonhole" to light the shape.
Round central flange with a more squared and attractive design. Metal aluminium ring surrounding leather center cap



RIV-7

DIAMETER: ø 350 mm - 13.80"
GRIP: Genuine Leather.
SPOKES: Aluminium, anodized.
CENTRAL FLANGES: Aluminium, anodized.
INNER RING: Aluminium, anodized.

Handmade cross stitching

ISOTTA HUB ADAPTER REQUIRED FOR FITTING

• Ref. Code: 1143_5



ILLUMINATED LOGO OPTION

The last ISOTTA innovation brings electricity to the center of the steering wheel **to illuminate boatbuilder logo.**

Backlight LED can be connected to the on/off key of the boat, to let logo illuminating when boat starts.

Colour of backlight may be customized.

Illuminated logo requires to use the new patented Isotta tilt helm, able to let steering wheel turning while the center pad still keeping the straight position.



TOR 3



- New -

DIAMETER: \varnothing 350 mm - 13.80"
GRIP: Genuine or vinyl Leather.
SPOKES: Stainless steel 316 polished.
CENTRAL FLANGES: Black anodized with silver ring
CENTER CAP: Leather.
Handmade cross stitching

Very sporty and solid spokes looking. Design of black central flange is also very squared to accentuate its robust shape.
The silver flat ring has six visible screws for a "rough" effect, and the center leather pad is slightly raised compared to the ring.

ISOTTA HUB ADAPTER REQUIRED FOR FITTING

• Ref. Code: 1141 5 N ST

FRASCO



DIAMETER: ø 350 mm - 13.80"
GRIP: Genuine or vinyl Leather.
SPOKES: Stainless steel 316 mirror polished.
CENTRAL FLANGES: Aluminium black anodized.
INNER RING: Aluminium polished.
CENTER CAP: Leather.
OPTIONS: Center cap with custom logo embossed.

ISOTTA HUB ADAPTER REQUIRED FOR FITTING

• Ref. Code: 1135_5

UNICA



DIAMETER: ø 350 mm - 13.80"
GRIP: Genuine or vinyl Leather.
SPOKES: Stainless steel 316.
CENTRAL FLANGES: Stainless steel 316.
CENTER CAP: Leather.
OPTIONS: Center cap with custom logo embossed.

ISOTTA HUB ADAPTER REQUIRED FOR FITTING

• Ref. Code: 1136_5



DIAMETER: ø 350 mm – 13.80"
 GRIP: Genuine Leather.
 SPOKES: Aluminium.
 CENTRAL FLANGES: Leather or PU.
 INNER RING: Stainless steel.
 CENTER CAP: Leather.
 OPTIONS: Center cap with custom logo embossed.

ISOTTA HUB ADAPTER REQUIRED FOR FITTING

• Ref. Code: 1132_5



DIAMETER: ø 350 mm – 13.80"
 GRIP: Genuine or vinyl Leather.
 SPOKES: Aluminium.
 CENTRAL FLANGES: Aluminium.
 CENTER CAP: Leather.
 OPTIONS: Center cap with custom logo embossed.

ISOTTA HUB ADAPTER REQUIRED FOR FITTING

• Ref. Code: 1120_5

ADMETO



DIAMETER: ø 350 mm - 13.80"
 GRIP: Leather.
 SPOKES: Polished with black inserts.
 CENTRAL FLANGE: Black anodized aluminium.
 INNER RING: Polished aluminium.
 CENTER CAP: Leather.
 OPTIONS: Center cap with custom logo.

ISOTTA HUB ADAPTER REQUIRED FOR FITTING

• Ref. Code: 1128_5



FANETE



Silver spokes

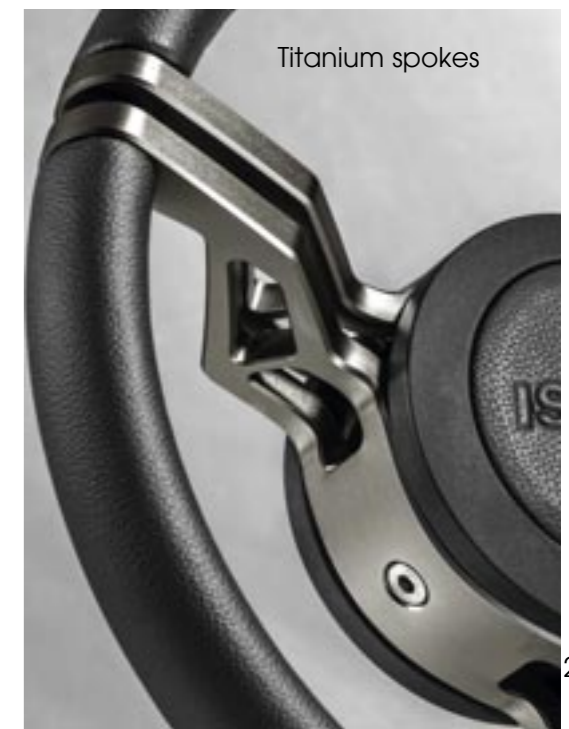
DIAMETER: ø 350 mm - 13.80"
 GRIP: Leather.
 SPOKES: Billet aluminium (available black - silver - titanium anodized).
 CENTRAL FLANGE: Aluminium (available black or silver anodized).
 CENTER CAP: Leather.
 OPTIONS: Center cap with custom logo embossed.

ISOTTA HUB ADAPTER REQUIRED FOR FITTING

• Ref. Code: 1123_5



Black spokes



Titanium spokes

POLARIS



DIAMETER: ø 350 mm – 13.80"
GRIP: Leather.
SPOKES: Stainless steel 316 polished.
CENTRAL FLANGES: Stainless steel 316 polished.
CENTER CAP: Leather.
OPTIONS: Center cap with custom logo embossed.

ISOTTA HUB ADAPTER REQUIRED FOR FITTING

• Ref. Code: 1117_5

ARES



DIAMETER: ø 350 mm – 13.80"
GRIP: Leather.
SPOKES: Stainless steel 316 polished.
CENTRAL FLANGES: Black anodized aluminium with inner silver ring.
CENTER CAP: Leather OR stainless steel 316 polished.
OPTIONS: Center cap with custom logo embossed.

ISOTTA HUB ADAPTER REQUIRED FOR FITTING

• Ref. Code: 1118_5

TORINDI



DIAMETER: ø 350 mm - 13.80"
GRIP: Leather.
SPOKES: Stainless steel 316 polished.
CENTRAL FLANGES: Black anodized aluminium with inner silver ring.
CENTER CAP: Leather OR stainless steel 316 polished.
OPTIONS: Center cap with custom logo embossed.

ISOTTA HUB ADAPTER REQUIRED FOR FITTING

• Ref. Code: 1121_5

GRAFFIO



DIAMETER: ø 350 mm - 13.80"
GRIP: Leather.
SPOKES: Anodized silver aluminium.
CENTRAL FLANGES: Anodized silver aluminium.
CENTER CAP: Leather.
OPTIONS: Center cap with custom logo embossed.

ISOTTA HUB ADAPTER REQUIRED FOR FITTING

• Ref. Code: 1120_5

ROVERETO



DIAMETER: ø 360mm - 14.20"
GRIP: Leather.
SPOKES: Double equal spokes in stainless steel 316 polished.
CENTRAL FLANGES: Aluminium, powder coated.
INNER RING: Stainless steel polished.
CENTER CAP: Leather.
OPTIONS: Center cap with custom logo embossed.

HUB ADAPTOR REQUIRED FOR FITTING

• Ref. Code: 178_6

DIAMA



DIAMETER: ø 350 mm - 13.80"
GRIP: Leather.
SPOKES: Equal spokes in Stainless steel 316 polished.
CENTRAL FLANGES: Stainless steel 316 polished (or leather).
CENTER CAP: Leather.
OPTIONS: Center cap with custom logo embossed.

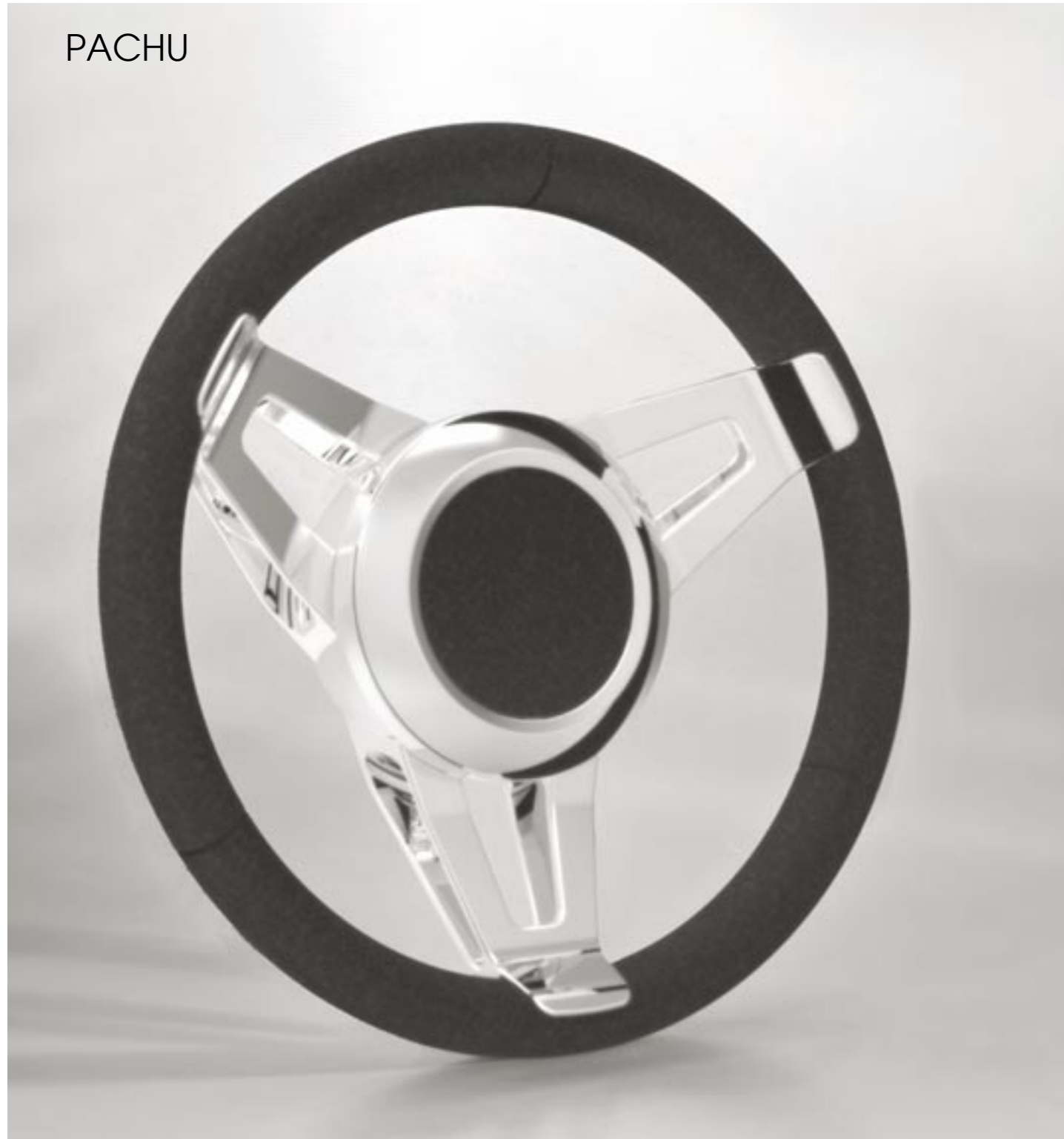
ISOTTA HUB ADAPTER REQUIRED FOR FITTING

• Ref. Code: 188_5 mod. DIAMA
• Ref. Code: 188_5FL mod. DIAMA FL

DIAMA FL



PACHU



DIAMETER: ø 350 mm - 13.80"
 GRIP: Leather.
 SPOKES: Equal spokes in stainless steel 316 polished.
 CENTRAL FLANGES: Stainless steel 316 polished.
 CENTER CAP: Leather.
 OPTIONS: Center cap with custom logo embossed.

INTEGRATED HUB ADAPTER

• Ref. Code: 1106_5

DAPONTE



DIAMETER: ø 355mm - 14"
 GRIP: Leather.
 SPOKES: Equal spokes in stainless steel 316 polished.
 Back side in leather.
 CENTRAL FLANGES: Stainless steel 316 polished.
 CENTER CAP: Leather.
 OPTIONS: Center cap with custom logo embossed.

ISOTTA HUB ADAPTER REQUIRED FOR FITTING

• Ref. Code: 1105_5



BERRA SP



DIAMETER: ø 350mm - 13.80"
GRIP: Leather.
SPOKES: Equal spokes in stainless steel SS316 polished.
CENTRAL FLANGE: Aluminium, silver anodized.
CENTER CAP: Brushed aluminium or leather.
OPTIONS: Center cap with custom logo embossed.

ISOTTA HUB ADAPTER REQUIRED FOR FITTING

• Ref. Code: 189_5_SP

BERRA FL



DIAMETER: ø 350mm - 13.80"
GRIP: Genuine or vinyl Leather.
SPOKES: Stainless steel SS316 polished.
CENTRAL FLANGE: Stainless steel SS316 polished.
CENTER CAP: Leather.
OPTIONS: Center cap with custom logo embossed.

ISOTTA HUB ADAPTER REQUIRED FOR FITTING

• Ref. Code: 189_5_FL

CARLOTTA



DIAMETER: \varnothing 350 mm - 13.80"
GRIP: Leather.
SPOKES: Equal double-spokes in stainless steel SS316.
CENTRAL FLANGE: Stainless steel SS316 polished.
CENTRAL CAP: Leather.
OPTIONS: Central cap with custom logo embossed.
Central flange in leather.

INTEGRATED HUB ADAPTER 3/4" TAPER REQUIRED FOR FITTING

• Ref. Code: 140_5_ST

CARLOTTA SATIN



DIAMETER: \varnothing 350 mm - 13.80"
GRIP: Leather.
SPOKES: Stainless steel 316 satin/mat finishing.
CENTRAL FLANGE: Stainless steel 316 satin/mat finishing.
CENTRAL CAP: Leather.
OPTIONS: Central cap with custom logo embossed.

INTEGRATED HUB ADAPTER REQUIRED FOR FITTING

• Ref. Code: 1107_5

TIVOLI ST



DIAMETER: \varnothing 350 mm - 13.80"
GRIP: Leather. Elliptic section.
SPOKES: Equal spokes in stainless steel 316 polished.
CENTRAL FLANGE: Stainless steel 316 polished.
CENTRAL CAP: Leather.
OPTIONS: Center cap with custom logo embossed.

INTEGRATED HUB ADAPTER REQUIRED FOR FITTING

• Ref. Code: 196_5

TIVOLI SAT



DIAMETER: \varnothing 350 mm - 13.80"
GRIP: Leather. Elliptic section.
SPOKES: Stainless steel 316 polished/mat finishing.
CENTRAL FLANGE: Stainless steel 316 polished/mat finishing.
CENTRAL CAP: Leather.
OPTIONS: Center cap with custom logo embossed.

INTEGRATED HUB ADAPTER REQUIRED FOR FITTING

• Ref. Code: 1112_5

CORSARO

DIAMETER: ø 350mm - 13.80"
GRIP: Leather.
With or without six chromed rings.
SPOKES: Aluminium, silver anodized.
CENTRAL FLANGE: Aluminium, silver anodized (or black)
CENTER CAP: Leather.
OPTIONS: Center cap with custom logo embossed.

INTEGRATED HUB ADAPTER

- Ref. Code: 1104_5
1104_5_6R



MLB



CORSARO 6R



DIAMETER: ø 350mm - 13.80"
GRIP: Leather.
SPOKES: Titanium or silver aluminium with leather on the bottom.
STUD: Special stud in stainless steel 316 polished.
CENTRAL FLANGES: Black anodized aluminium.
CENTER CAP: Aluminium embossed.
OPTIONS: Center cap with custom logo.

ISOTTA HUB ADAPTER REQUIRED FOR FITTING

- Ref. Code: 1109_5

REX



DIAMETER: ø 350mm - 13.80"
 GRIP: Leather.
 SPOKES: Double equal spokes in stainless steel 316 polished.
 CENTRAL FLANGE: Aluminium, black anodized.
 INNER RING: Aluminium, silver anodized.
 CENTER CAP: Leather.
 OPTIONS: Center cap with custom logo embossed.

INTEGRATED HUB ADAPTER

• Ref. Code: 199_5



MEDELANA



DIAMETER: ø 360mm - 14.18"
 GRIP: Leather.
 SPOKES: Equal spokes in stainless steel 316 polished.
 CENTRAL FLANGE: Powder coated or leather.
 INNER RING: Stainless steel 316 polished.
 CENTER CAP: Leather.
 OPTIONS: Center cap with custom logo embossed. Central flange in leather.

ISOTTA HUB ADAPTER 3/4" TAPER REQUIRED FOR FITTING

• Ref. Code: 177_6



MESOLA

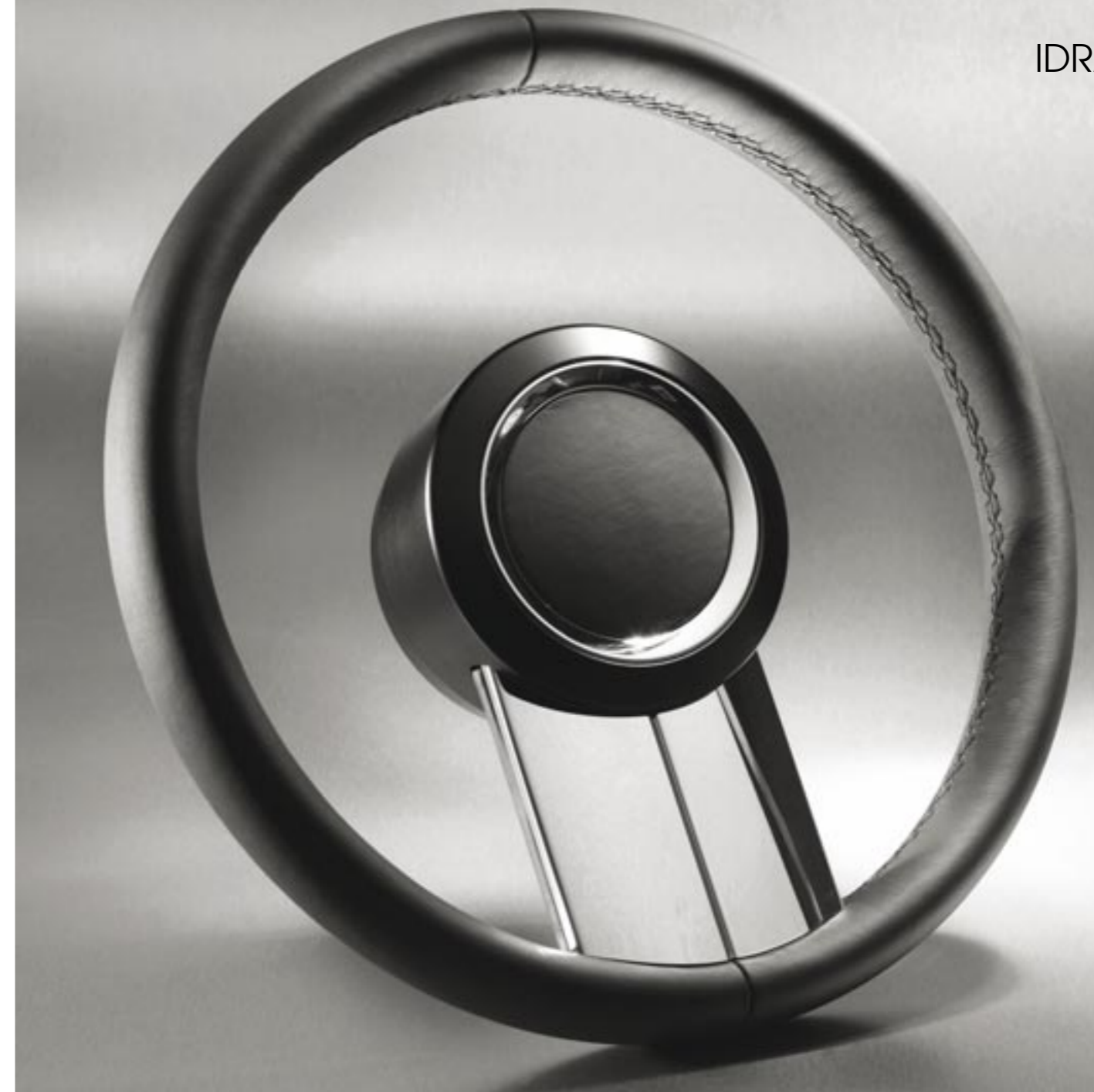
DIAMETER: ø 350mm - 13.80"
GRIP: Leather.
GRIP RING: Stainless steel 316 polished.
SPOKES: Equal double-spokes in stainless steel 316 polished.
CENTRAL FLANGE: Leather.
INNER RING: Stainless steel 316 polished.
CENTER CAP: Leather.
OPTIONS: Central cap with custom logo embossed.

ISOTTA HUB ADAPTER 3/4" TAPER REQUIRED FOR FITTING

• Ref. Code: 179_5



IDRA



DIAMETER: ø 350mm - 13.80"
GRIP: Leather.
SPOKES: Single spoke in stainless steel 316 polished. Back side in leather.
CENTRAL FLANGE: Painted or leather.
INNER RING: Stainless steel 316 polished.
CENTER CAP: Leather.
OPTIONS: Central cap with custom logo embossed.

ISOTTA HUB ADAPTER 3/4" TAPER REQUIRED FOR FITTING

• Ref. Code: 186_5

CELLINI ST

DIAMETER: ø 350mm - 13.80"
GRIP: Leather.
SPOKES: 4 spokes at 90° in stainless steel 316 polished. Back side in leather.
CENTRAL FLANGE: Leather.
INNER RING: Stainless steel 316 polished.
CENTER CAP: Leather.
OPTIONS: Central cap with custom logo embossed.

ISOTTA HUB ADAPTER 3/4" TAPER REQUIRED FOR FITTING

• Ref. Code: 147_5



RATIO

DIAMETER: ø 350mm - 13.80"
GRIP: Leather.
SPOKES: Double equal spokes in stainless steel 316 polished.
CENTRAL FLANGE: Aluminium, black anodized.
INNER RING: Aluminium, silver anodized.
CENTER CAP: Leather.
OPTIONS: Central cap with custom logo embossed.

INTEGRATED HUB ADAPTER

• Ref. Code: 1100_5



FERRARA 2

DIAMETER: ø 350mm - 13.80"
GRIP: Leather.
SPOKES: 2 pairs 180° spokes in stainless steel 316 polished. Back side in leather.
CENTRAL FLANGE: Leather.
INNER RING: Stainless steel 316 polished.
CENTER CAP: Leather.
OPTIONS: Central cap with custom logo embossed.
Central flange powder coated.

ISOTTA HUB ADAPTER 3/4" TAPER REQUIRED FOR FITTING

• Ref. Code: 171_5



FERRARA 3

DIAMETER: ø 350mm - 13.80"
GRIP: Leather.
SPOKES: 3 pairs equal spokes in stainless steel 316 polished. Back side in leather.
CENTRAL FLANGE: Leather.
INNER RING: Stainless steel 316 polished.
CENTER CAP: Leather.
OPTIONS: Central cap with custom logo embossed.
Central flange powder coated.

ISOTTA HUB ADAPTER 3/4" TAPER REQUIRED FOR FITTING

• Ref. Code: 170_5



VERTICE Wood



DIAMETER: ø 350mm - 13.80"
 GRIP: Wood.
 SPOKES: 3 equal spokes in anodized aluminium.
 CENTRAL FLANGE: Anodized aluminium.
 CENTER CAP: Leather.
 OPTIONS: Central cap with custom logo embossed. Spokes in chrome plate

ISOTTA HUB ADAPTER 3/4" TAPER REQUIRED FOR FITTING

• Ref. Code: 143_5_RW

VERTICE 6R



DIAMETER: ø 350mm - 13.80"
 GRIP: Leather with 6 chromed rings.
 SPOKES: 3 equal spokes in anodized aluminium.
 CENTRAL FLANGE: Anodized aluminium..
 CENTER CAP: Leather.
 OPTIONS: Central cap with custom logo embossed.

ISOTTA HUB ADAPTER 3/4" TAPER REQUIRED FOR FITTING

• Ref. Code: 143_5_6R

VERTICE Leather



DIAMETER: ø 350mm - 13.80"
 GRIP: Leather.
 SPOKES: 3 equal spokes in anodized aluminium.
 CENTRAL FLANGE: Anodized aluminium.
 CENTER CAP: Leather.
 OPTIONS: Central cap with custom logo embossed.

ISOTTA HUB ADAPTER 3/4" TAPER REQUIRED FOR FITTING

• Ref. Code: 143_5

PRESTIGIO SS



DIAMETER: ø 350mm - 13.80"
 GRIP: Leather.
 VERTICAL SPOKES: Stainless steel 316 polished.
 HORIZONTAL SPOKES: Satin and anodized aluminium..
 INNER RING: stainless steel 316 polished..
 CENTER CAP: Leather.
 OPTIONS: Central cap with custom logo embossed.

ISOTTA HUB ADAPTER 3/4" TAPER REQUIRED FOR FITTING

• Ref. Code: 155_5_SS

VALLELUNGA



DIAMETER: ø 345mm - 13.58" - Flat bottom shape.
 GRIP: Leather.
 SPOKES: Anodized aluminium.
 Vertical sticks in stainless steel 316 polished.
 CENTRAL FLANGE: Anodized aluminium, smokey grey finishing.
 CENTRAL RING: Polished aluminium.
 OPTIONS: Central cap with custom serigraphy logo.

ISOTTA HUB ADAPTER 3/4" TAPER REQUIRED FOR FITTING

• Ref. Code: 126_4

ZULAG



DIAMETER: ø 345mm - 13.58"
 GRIP: Leather.
 SPOKES: Satin and anodized aluminium.
 Inner portion in SS316 polished.
 CENTRAL FLANGE: Anodized aluminium.
 INNER RING: Stainless steel 316 polished.
 CENTRAL CAP: Aluminium disk.
 OPTIONS: Central cap with custom serigraphy logo.

ISOTTA HUB ADAPTER 3/4" TAPER REQUIRED FOR FITTING

• Ref. Code: 134_4

BORGIA



DIAMETER: ø 360mm - 14.18"
 GRIP: Leather.
 SPOKES: Parallel spokes in stainless steel 316 polished. Back side in leather.
 CENTRAL FLANGE: Stainless steel 316 polished.
 CENTRAL CAP: Leather.
 OPTIONS: Central cap with custom logo embossed.

ISOTTA HUB ADAPTER 3/4" TAPER REQUIRED FOR FITTING

• Ref. Code: 181_6

ITACA



DIAMETER: ø 410mm - 16.14"
 GRIP: Leather.
 SPOKES: 5 pair brushed and anodized spokes.
 CENTRAL FLANGE: Brushed and anodized aluminium.
 CENTRAL CAP: Leather.
 OPTIONS: Central cap with custom logo embossed.

ISOTTA HUB ADAPTER 3/4" TAPER REQUIRED FOR FITTING

• Ref. Code: 175_40

Q-BLUE

- New -



ORLANDO

- New -



DIAMETER: ø 350 mm - 13.80"
GRIP: Poliurethane, leather look effect
SPOKES: Aluminium, powder coated.

Different painting colour available

ISOTTA HUB ADAPTER REQUIRED FOR FITTING

• Ref. Code: 1145_5



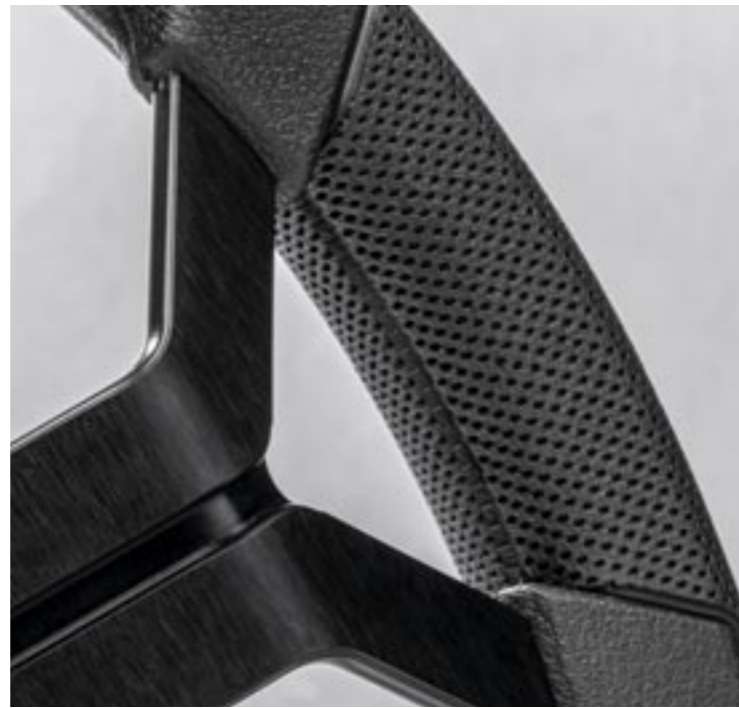
DIAMETER: ø 350 mm - 13.80"
GRIP: Poliurethane, leather look effect.
SPOKES: Urethane with chromed inserts.
CENTRAL FLANGES: Chromed.

ISOTTA HUB ADAPTER REQUIRED FOR FITTING

• Ref. Code: 1147_5

KYRA

- New -



DIAMETER: ø 350mm - 13.80"
GRIP: Leather look urethane with effect with perforated effect.
SPOKES: Aluminium, anodized.
CENTRAL FLANGE: Chromed.

Available with different anodized aluminium colours: black, grey/titanium or silver

ISOTTA HUB ADAPTER REQUIRED FOR FITTING

• Ref. Code: 1146_5

CHP

- New -



DIAMETER: ø 350 mm - 13.80"
GRIP: Leather look urethane with stainless rings.
SPOKES: Aluminium, anodized
CENTRAL FLANGES: Urethane with metal ring

Available with different anodized aluminium colours: black, grey/titanium or silver

ISOTTA HUB ADAPTER REQUIRED FOR FITTING

• Ref. Code: 1131_5



CESCA

- DIAMETER: ø 350mm - 13.80"
 GRIP: Poliurethan leather look or leather.
 (model CESCA INS with 3 ABS inserts
 various colors)
 SPOKES: 3 equal spokes in stainless steel 316
 polished.
 CENTRAL CAP: Leather
 OPTIONS: Center cap with custom logo
 embossed.

INTEGRATED HUB ADAPTER REQUIRED FOR FITTING

- Ref. Code: 184_5 mod. CESCA
 187_5 mod. CESCA INS



FIUME INS



- DIAMETER: ø 350mm - 13.80"
 GRIP: Poliurethan, leather look. (Option: 3 insert with selected colors or finishing)
 SPOKES: Anodized aluminium.
 CENTRAL FLANGE: Brushed/anodized aluminium.
 CENTRAL CAP: Leather.
 OPTIONS: Center cap with custom logo embossed.

INTEGRATED HUB ADAPTER REQUIRED FOR FITTING

- Ref. Code: 185_5_INS
 185_5

VTR14

- DIAMETER: ø 350mm - 13.80"
 GRIP: Poliurethan leather look.
 SPOKES: Satin silver aluminium.
 CENTRAL FLANGE: Aluminium powder coated.
 CENTRAL CAP: Silver brushed aluminium.
 OPTIONS: Center cap with custom logo.

ISOTTA HUB ADAPTER REQUIRED FOR FITTING

- Ref. Code: 1113_5PUN



FIUME



ARGO

DIAMETER: ø 350mm - 13.80"
 GRIP: Poliurethan, leather look.
 Elliptic section.
 SPOKES: Double equal spokes in satin silver aluminium.
 CENTRAL FLANGE: Aluminium, black anodized.
 CENTRAL CAP: Aluminium disk.
 OPTIONS: Center cap with custom serigraphy logo.

INTEGRATED HUB ADAPTER

• Ref. Code: 197_5



SKEMA

DIAMETER: ø 350mm - 13.80"
 GRIP: Poliurethan, leather look.
 SPOKES: Brushed/anodized silver aluminium.
 CENTRAL RING: Anodized silver aluminium.
 CENTRAL CAP: Leather or aluminium disk.
 OPTIONS: Center cap with custom logo embossed.

INTEGRATED HUB ADAPTER REQUIRED FOR FITTING

• Ref. Code: 191_5 mod. SKEMA
 191_5_2 mod. SKEMA 2

RUNZI

DIAMETER: ø 350mm - 13.80"
 GRIP: Poliurethan, leather look.
 Elliptic section.
 SPOKES: 5 equal spokes in satin silver aluminium.
 CENTRAL FLANGE: Aluminium, black anodized.
 CENTRAL CAP: Aluminium disk.
 OPTIONS: Center cap with custom serigraphy logo.

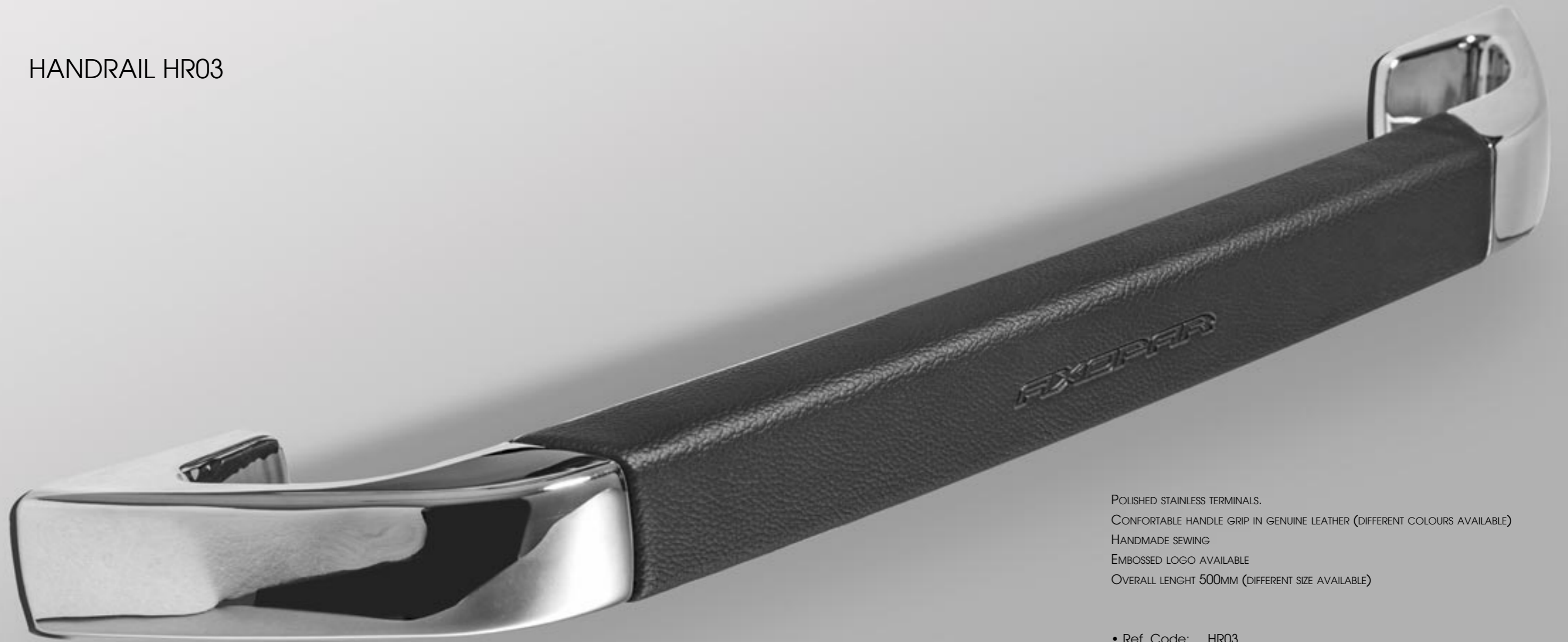
INTEGRATED HUB ADAPTER REQUIRED FOR FITTING

• Ref. Code: 194_5



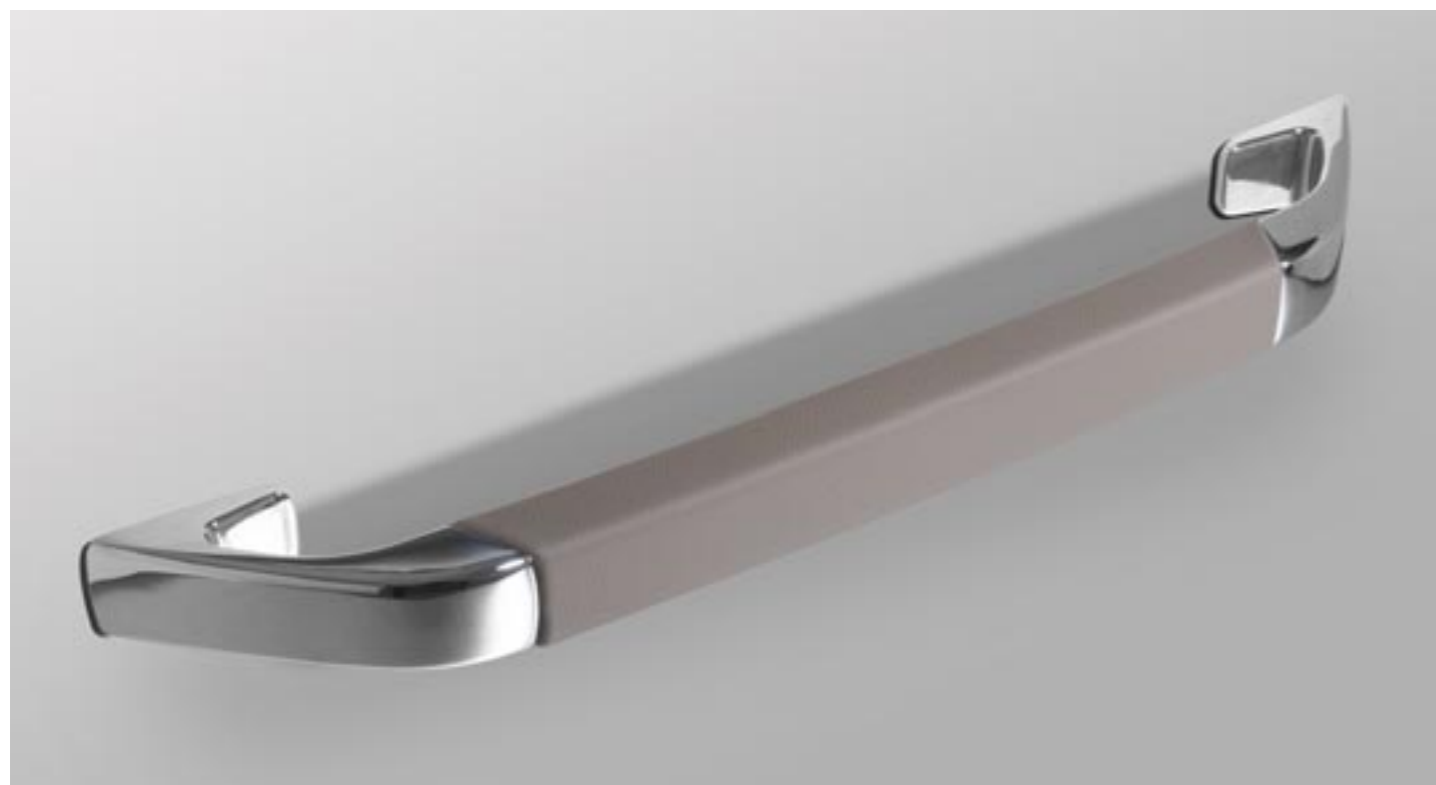
SKEMA 2

HANDRAIL HR03



POLISHED STAINLESS TERMINALS.
COMFORTABLE HANDLE GRIP IN GENUINE LEATHER (DIFFERENT COLOURS AVAILABLE)
HANDMADE SEWING
EMBOSSED LOGO AVAILABLE
OVERALL LENGTH 500MM (DIFFERENT SIZE AVAILABLE)

• Ref. Code: HR03





ISOTTA

IFRA SRL

tel. +39 0532 1883899 • info@isotta.it • www.isotta.com